

# Assembly Instructions

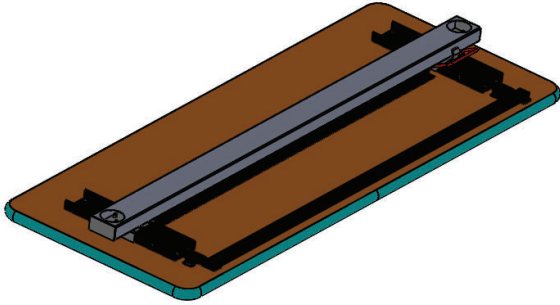
Elemental

Nest and Fold Table



If you have damaged or missing components,  
Please contact customer service at 1-800-328-1061

# Hardware and Components



Pre-assembled  
Table Top

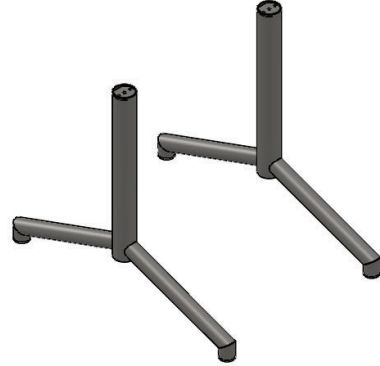
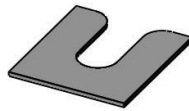


Table Legs Qty 2



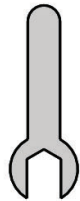
Caster Qty 4



Shims Qty 8



Machine Bolt Qty 4



Caster Wrench



3/16 Inch Allen Wrench

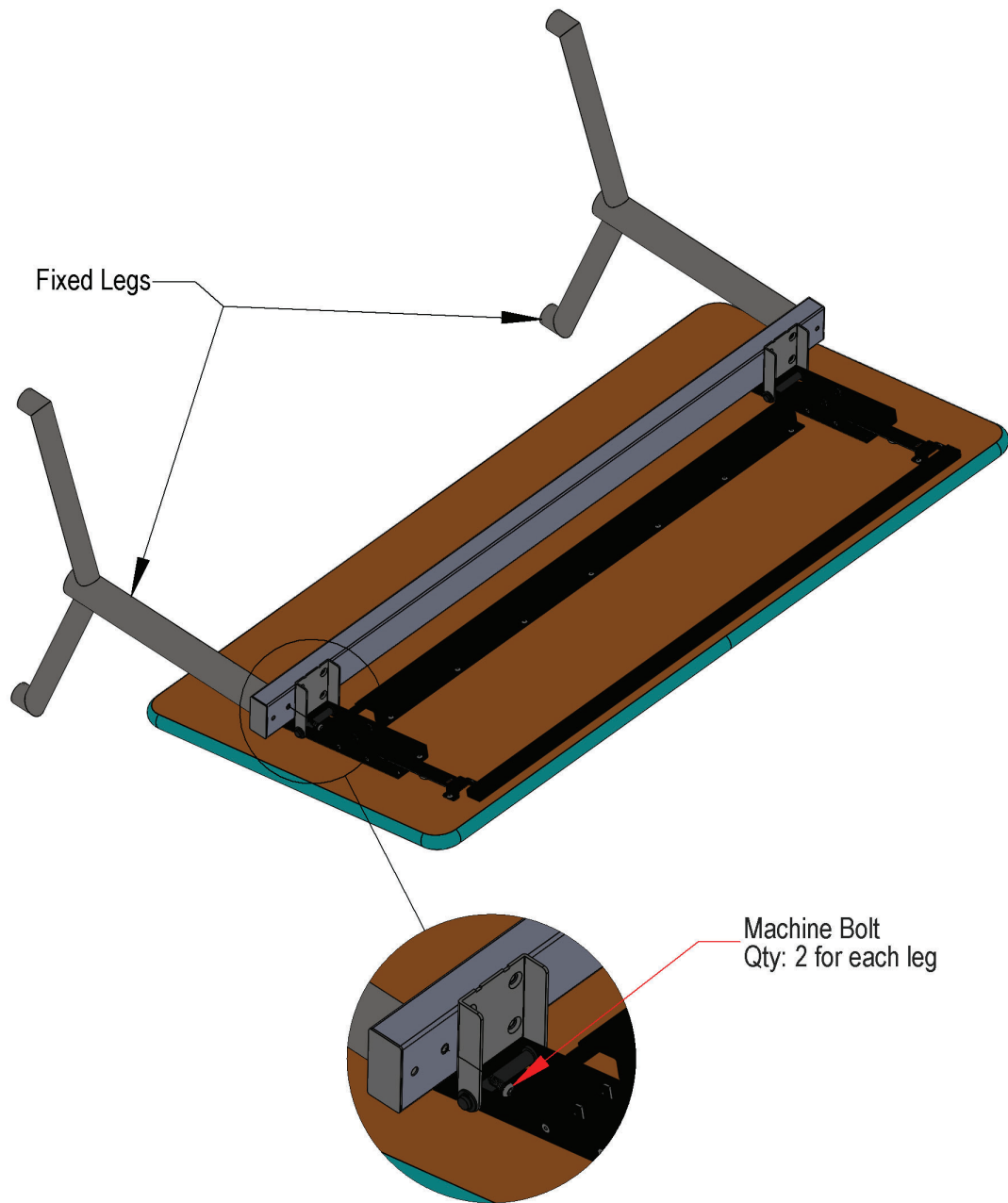
## Special Notes:

- TOOLS REQUIRED:
  - 3/16 INCH Allen Wrench.
  - Caster Wrench.
- Check that all components are accounted for and undamaged before assembling.
- Please assemble the product in a clean and dry area.
- You will need another person to help assemble the product. Team lifting required.
- Clean the product with a mild cleaner and a damp cloth.

# Assembly Instructions

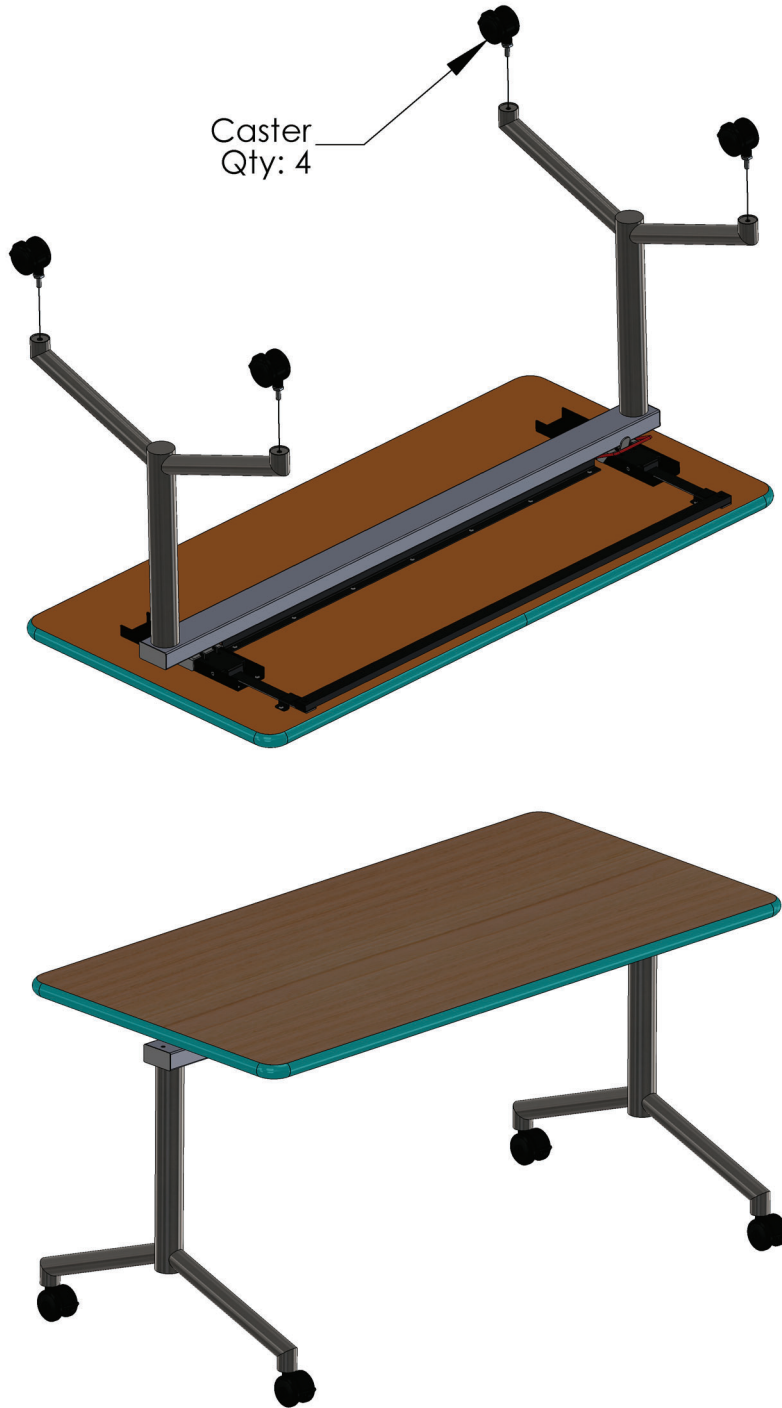
## 1. TABLE LEG INSTALLATION.

- a. Place the table on a flat clean surface and fold the center beam to access the holes for machine bolts.
- b. Secure the table legs using the supplied machine bolts. Each leg requires two bolts.
- c. NOTE: Adjustable height legs install with set screw, and hole pattern, facing toward center of table.



**2. CASTER INSTALLATION.**

- a. With the table in the upside down position, install the casters with the supplied caster wrench.



**3. LEVELING INSTRUCTIONS.**

- a. If table is not level, use the supplied shims in order to level the table.
- b. Loosen the two counter sink screws as shown below and insert the supplied shims. Do this on both mechanisms, not just one.
- c. Retighten the screws and check the table. If the table is not to the desired position, insert additional shims.
- d. NOTE: table can be shimmed from front or rear, depending on desired effect.

