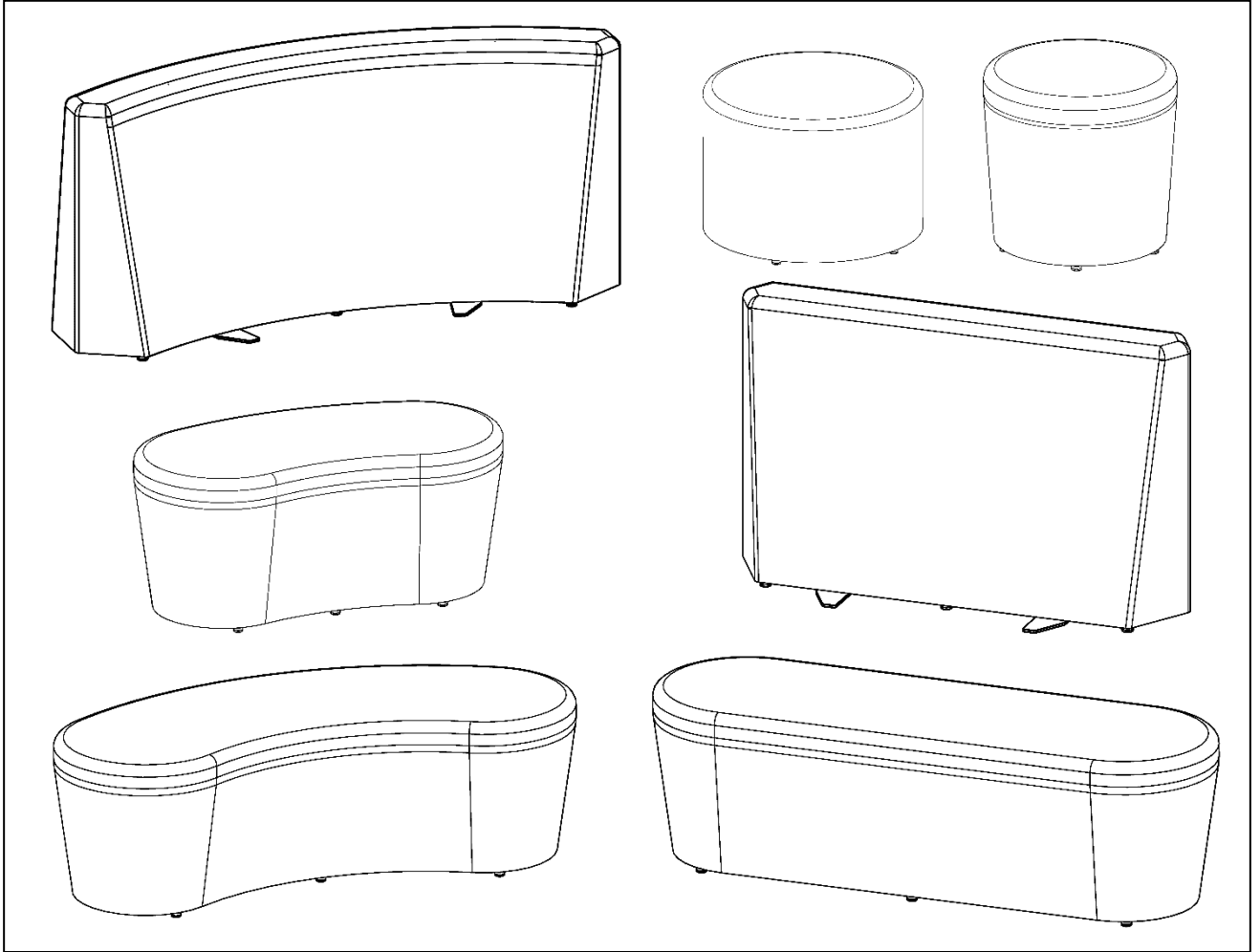


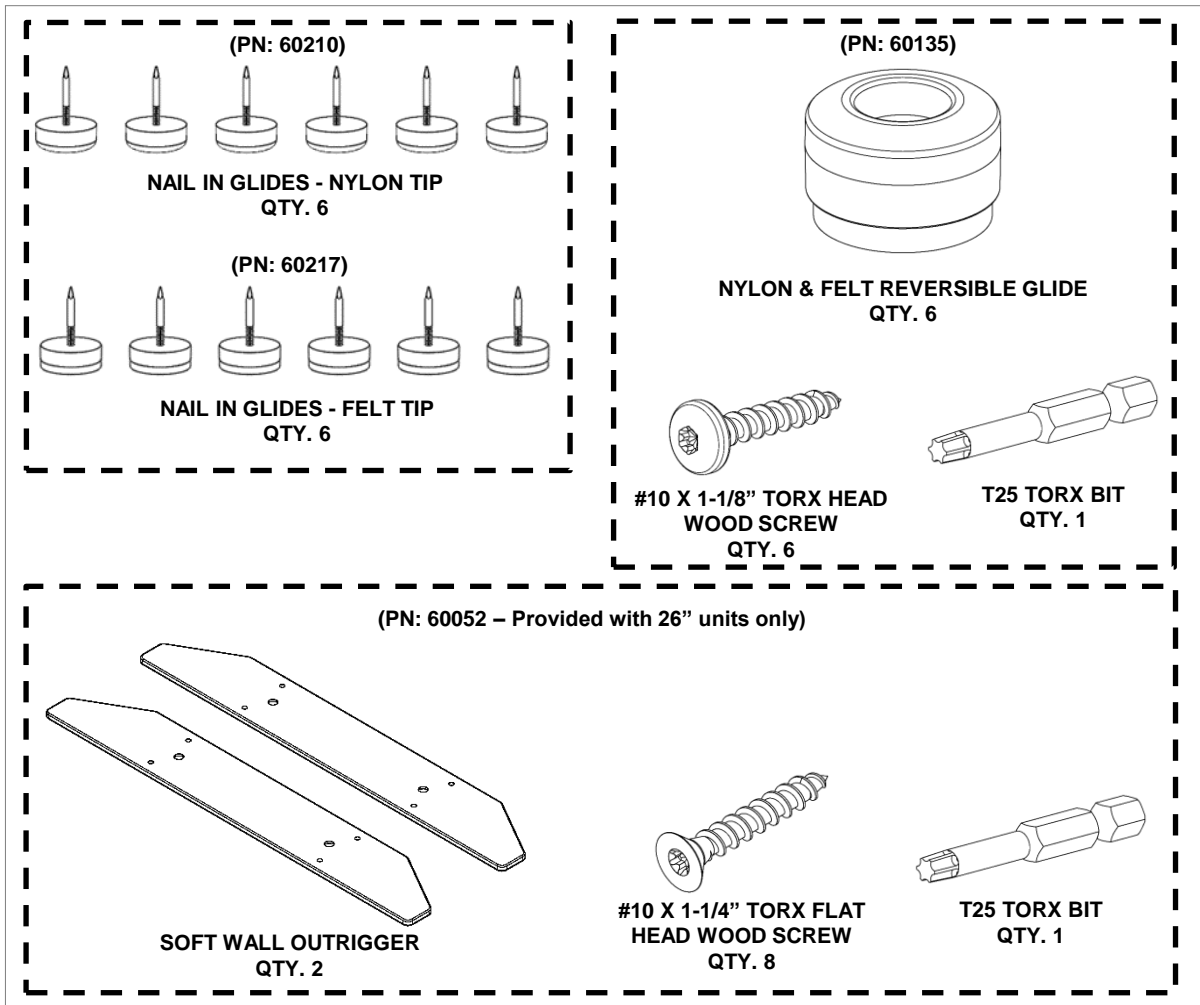
Assembly Instructions

Flowform Soft Seating Line



If you have damaged or missing components,
please contact customer service at 1-800-328-1061

Hardware and Components

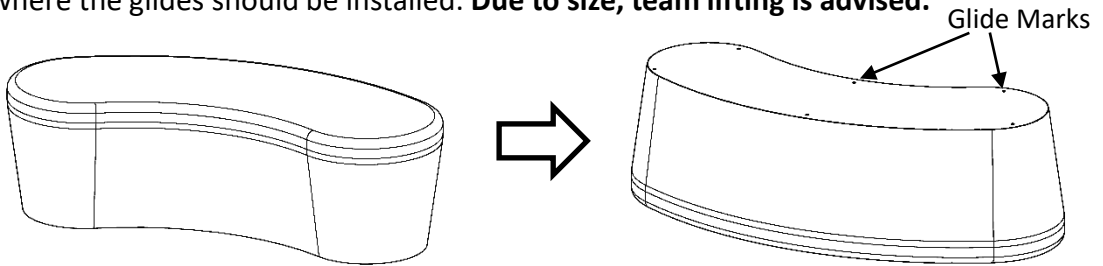


Special Notes:

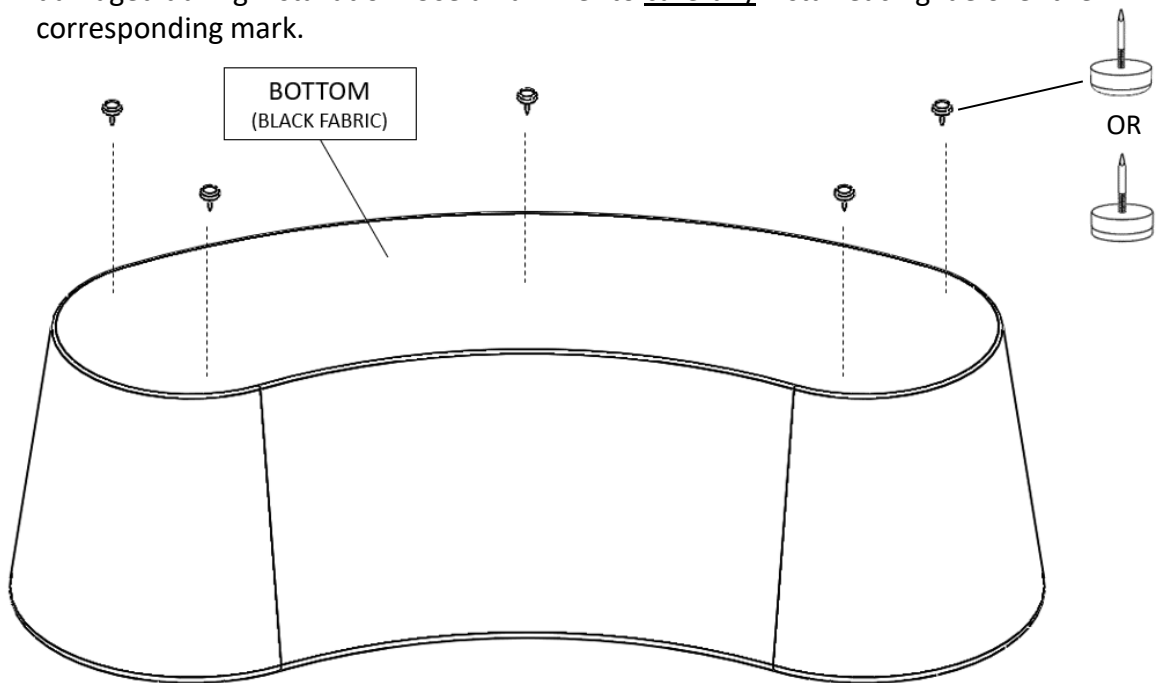
- TOOLS REQUIRED:
 - Drill w/ T25 Torx driver bit (bit provided)
- Check that all components are accounted for and undamaged before assembling.
- Please assemble the product in a clean and dry area.
- You may need another person to help assemble the product. Team lifting may be required.
- Clean the product with a mild cleaner and a damp cloth.
- Replacement hardware listed on last page.

Assembly Instructions

1. Flip the soft seating unit over on to a clean smooth surface that will not harm the fabric. On the underside of the unit there are marked spots along the perimeter where the glides should be installed. **Due to size, team lifting is advised.**

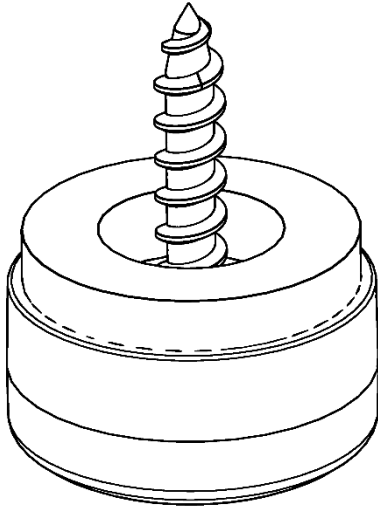


- 2A. FOR NAIL IN GLIDES:** Select the appropriate glides to be installed from the 2 nail in glide packs that have been provided (i.e. Nylon for carpet, felt for smooth surfaces). **NOTE:** Each pack has an extra glide (5+1) provided in case one of the glides is damaged during installation. Use a hammer to carefully install each glide over the corresponding mark.

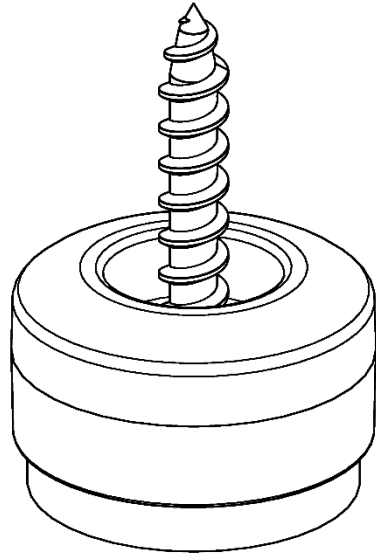


(some units may appear different than reference picture above)

2B. FOR SCREW IN GLIDES: The glides can be installed either as nylon or felt glides. Shown on the left is how to install the screw into the glide if you want the nylon side down, and on the right is how to install the screw if you want the felt side down.

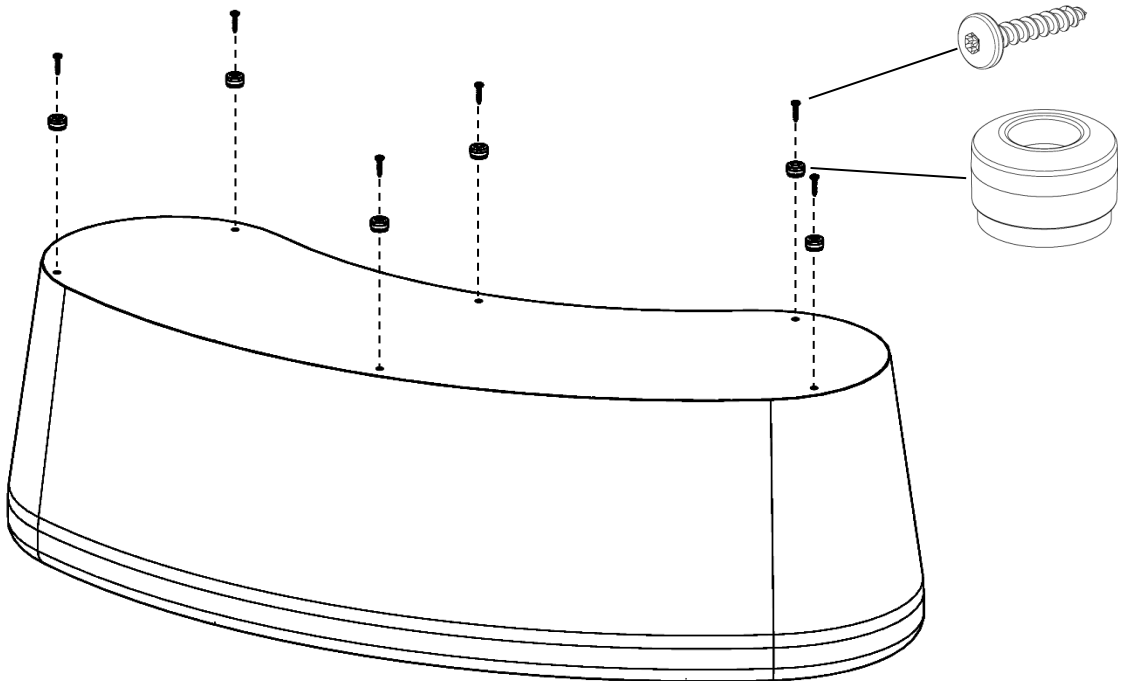


Nylon Position



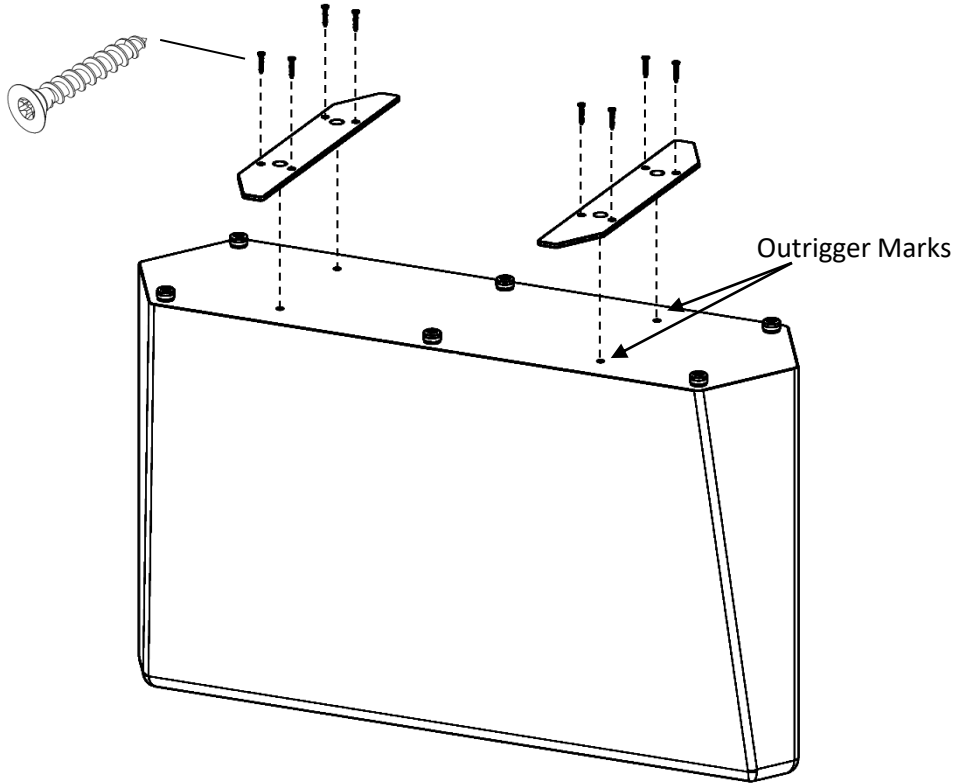
Felt Position

SCREW IN GLIDES (Continued): Install the #10 X 1-1/8" Torx Wood Screw into the glide in the position you would prefer (nylon or felt) and then install them into the unit in the marks around the perimeter with the provided T25 Torx Bit.



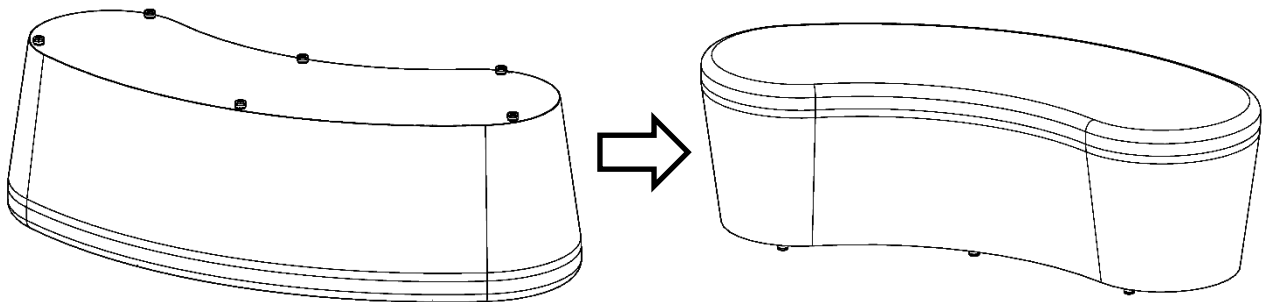
(some units may appear different than reference picture above)

3. **FOR 26”H UNITS ONLY:** All 26”H units require outriggers to be installed. Identify the 4 marks on the underside of the unit. Position outriggers as shown below and use the provided T25 Torx bit to install the #10 X 1-1/4” Torx Flat Head Wood Screws.



(some units may appear different than reference picture above)

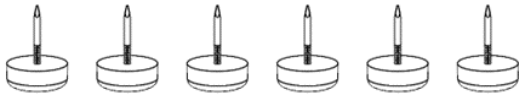
4. Flip unit over.



ASSEMBLY COMPLETE

Replacement Hardware

[REPLACEMENT GLIDE PACK: 60210-R]



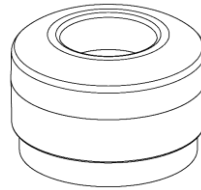
NAIL IN GLIDES - NYLON TIP
QTY. 6

[REPLACEMENT GLIDE PACK: 60217-R]

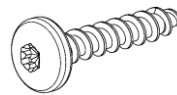


NAIL IN GLIDES - FELT TIP
QTY. 6

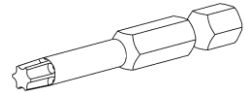
[REPLACEMENT GLIDE PACK: 60135-R]



NYLON & FELT REVERSIBLE GLIDE
QTY. 6

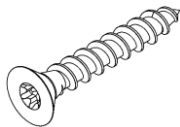


#10 X 1-1/8" TORX HEAD
WOOD SCREW
QTY. 6

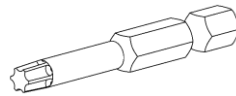


T25 TORX BIT
QTY. 1

[REPLACEMENT HARDWARE PACK: 60175-R]



#10 X 1-1/4" TORX FLAT
HEAD WOOD SCREW
QTY. 8



T25 TORX BIT
QTY. 1