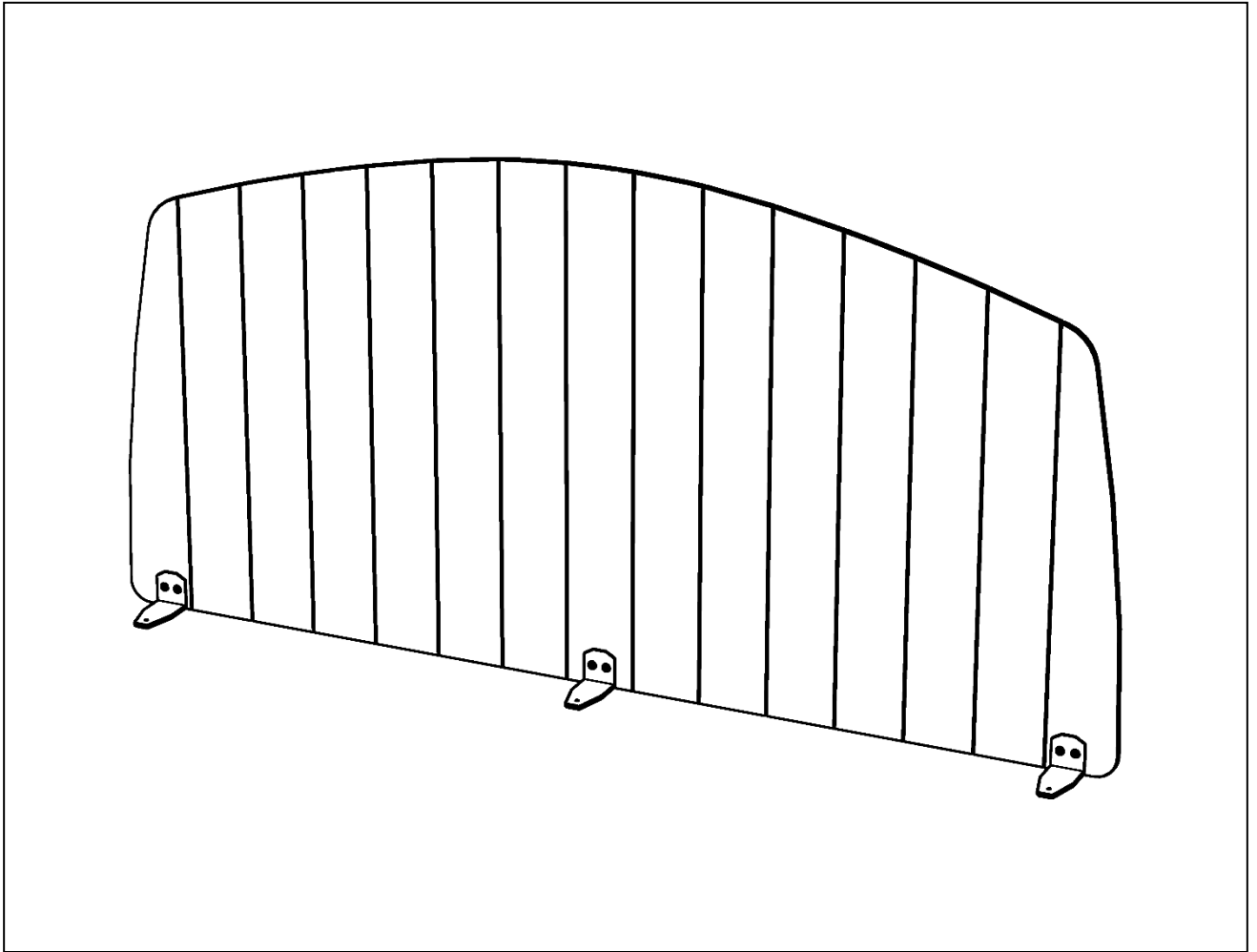


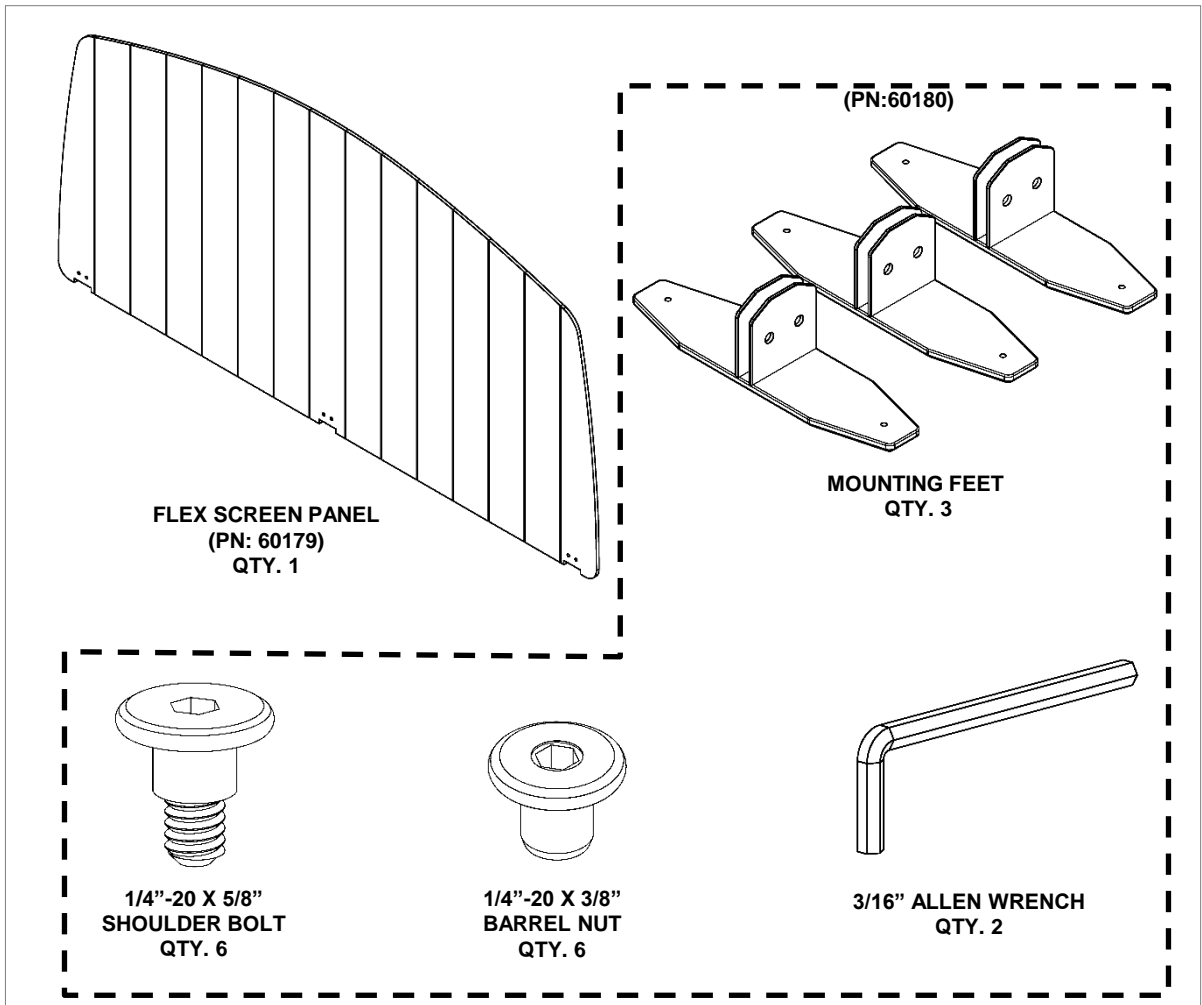
# Assembly Instructions

## Flowform Flex Screen



If you have damaged or missing components,  
please contact customer service at 1-800-328-1061

# Hardware and Components

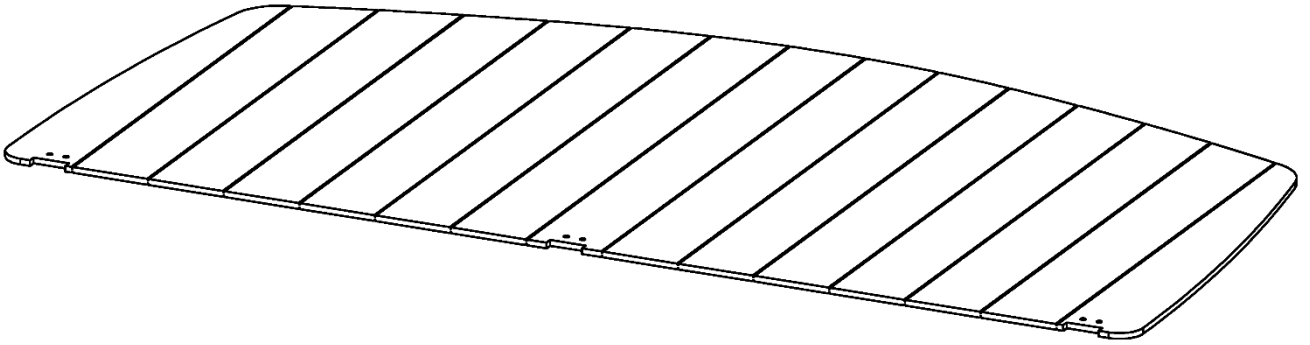


## Special Notes:

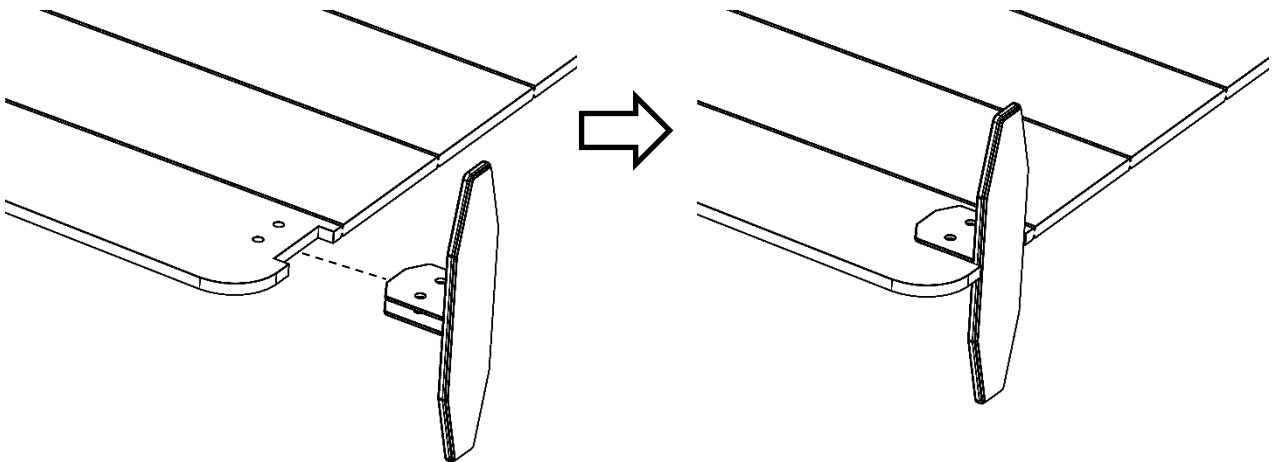
- TOOLS REQUIRED:
  - Optional Drill w/ 3/16" Allen Wrench driver bit.
- Check that all components are accounted for and undamaged before assembling.
- Please assemble the product in a clean and dry area.
- Clean the product with a mild cleaner and a damp cloth.
- Replacement hardware listed on last page.

# Assembly Instructions

1. Lay Flex Screen Panel down on a clean smooth surface that will not harm the panel.

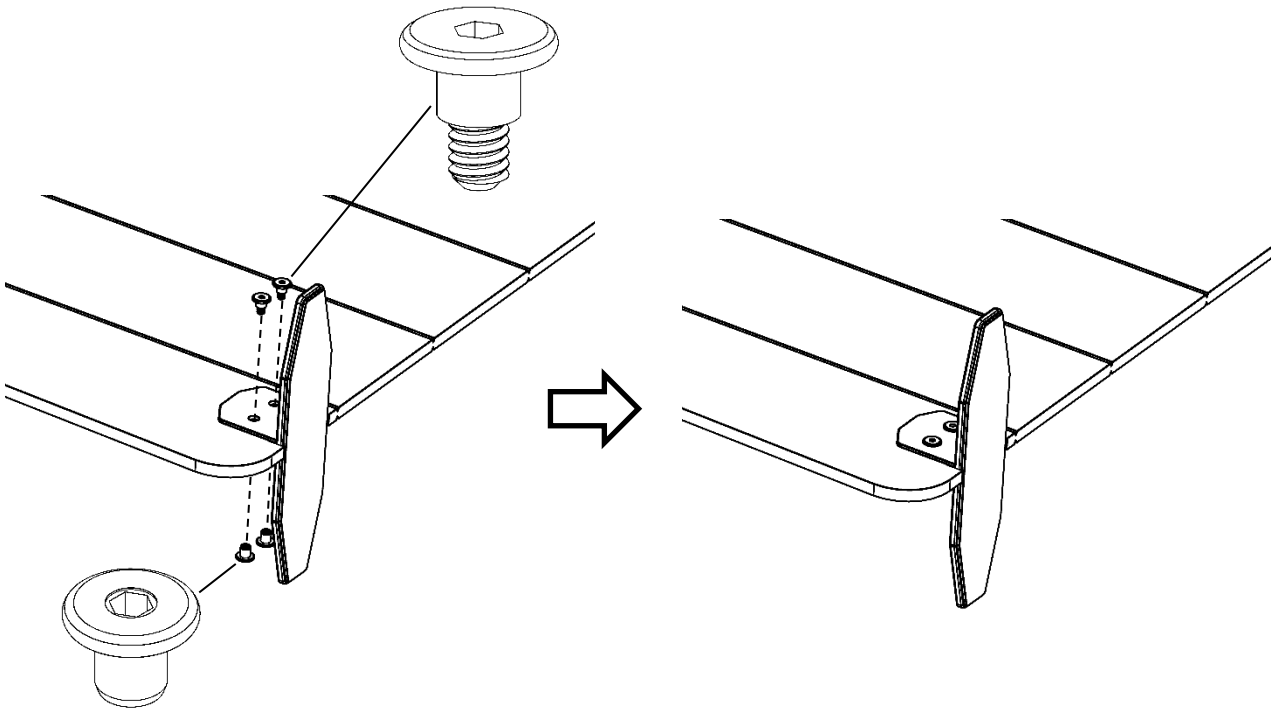


2. Align the holes in the top brackets of a Foot with the holes on one of the ends Flex Screen Panel. The bottom of the foot should end up even with the panel.

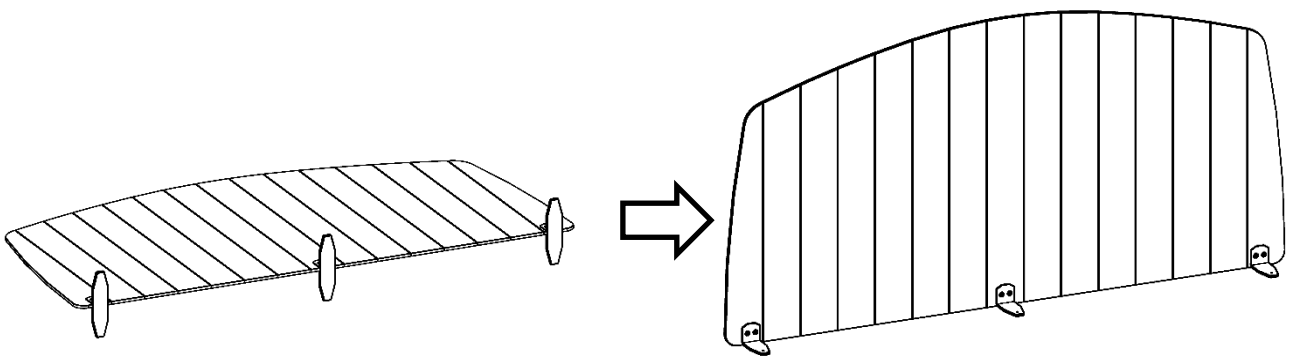


3. Install two of the 1/4"-20 X 5/8" Shoulder Bolts and 2 of the 1/4"-20 X 3/8" Barrel Nuts using the two 3/16" Allen Wrenches as shown. Repeat steps 2 through 3 for the other two feet.

**HINT:** You could use one of the Allen Wrenches and an optional power drill with a 3/16" Allen bit.



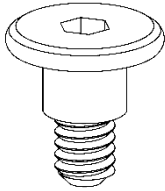
4. Lift the assembled Flex Screen into the upright position.



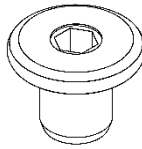
**ASSEMBLY COMPLETE**

# Replacement Hardware

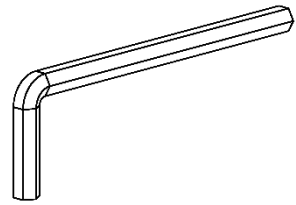
[REPLACEMENT HARDWARE PACK: 60187-R]



**1/4"-20 X 5/8"  
SHOULDER BOLT  
QTY. 6**



**1/4"-20 X 3/8"  
BARREL NUT  
QTY. 6**



**3/16" ALLEN WRENCH  
QTY. 2**